

Randy Sweet



Sweet Manufacturing was built on the knowledge and performance of Randy Sweet's over 50 years of racing. Randy has driven and won in multiple different divisions and cars that range from Super Modifieds to Sprint Cars and many more.

One of Randy's greatest accomplishments came in 1984 when he built a 2200 lb stock car that featured many of his early products and innovations. The "Rocket" car broke track records all over the country and continues to hold several. The "Rocket" car can now be seen on display in Speedy Bill's Museum of Speed in Lincoln, Nebraska

Randy's winning background and experience is what allows all of us at Sweet Manufacturing to proudly say that our products are built from experience and proven by performance.





R.E.M. Finish and Dyno Available
001-99999

Integrated Rack and Pinion

PART NO.

005-93345-235

**RACK
PREFIX**

005- 93 3 4 5 -.235
(1) (2) (3) (4) (5)

RACK SPEED (1)

- 30 = 1 7/8"
- 40 = 2"
- 50 = 2-1/4"
- 60 = 2-1/2"
- 80 = 3"
- 90 = 3-1/4"
- 91 = 3-1/2"
- 92 = 3-3/4"
- 93 = 4"
- 94 = 4-1/4"
- 95 = 4-1/2"

CENTER DISTANCE (2)

- 1 = 16-1/2"
- 2 = 17-1/4"
- 3 = 18-1/4"
- 5 = SPECIAL ORDER
- 6 = 19-1/4"
- 7 = 19-3/4"
- 8 = 18/19-1/4"

POWER ASSIST (3)

- 1 = MANUAL
- 4 = DUAL POWER
- 5 = XL DUAL POWER

SERVO (5)

- .185 - XX LIGHT
- .200 - X LIGHT
- .210 - LIGHT
- .220 - LIGHT
- .235 - MED. LIGHT
- .250 - MEDIUM
- .265 - MEDIUM HEAVY
- .275 - HEAVY
- .300 - STIFF

RACK ENDS (4)

- 2 = ON CENTER (5/8" - 18 THREADED STUD)
- 3 = ROD END EYE (5/8" - 18 THREADED HOLE)
- 4 = ON CENTER ROD END EYE
- 5 = STD. SLOTTED EYE
- 6 = UPSIDE DOWN SLOTTED EYE
- 7 = DUAL HOLE ROD END EYE (ROCKET)
- 8 = R/H ON CENTER ROD END - L/H ROD END EYE
- 9 = R/H DBL SLOTTED UP - L/H SLOTTED UP
- 11 = R/H SLOTTED DOWN - L/H SLOTTED UP
- 12 = R/H SLOTTED UP - L/H SLOTTED DOWN

Integrated Rack and Pinions are available in 11 different ratios with several different rack ends, center distances, and servos. Sweet Manufacturing has been providing the smoothest and most reliable rack and pinions in the racing industry for 30 plus years. Randy Sweet was the first to provide the racer with a rack that could endure the loads at race tracks such as Winchester (IN) and Eldora (OH). Every Rack and Pinion is produced and assembled entirely in Kalamazoo, MI by the professionals at Sweet Manufacturing.



Sweet Midget Rack



005-934615 - 4" Midget Rack

005-944615 - 4-1/4" Midget Rack

005-954615 - 4-1/2" Midget Rack

Using the knowledge of Brian Allegresso and Randy Sweet, Sweet Mfg.. produced a Rack and Pinion that has the ability to clamp to a solid front axle and eliminate the sometimes bulky and heavy steering system that is associated with Midgets and Asphalt sprints. The center distance is 14" and many rod ends in many different sizes can be used.

Sweet Mini Rack

033-27114 - 2-3/4" Mini Rack and Pinion

033-47114 - 4-1/4" Mini Rack and Pinion

033-52114 - 5-1/4" Mini Rack and Pinion



The Mini Rack and Pinion has three different ratios, from 2-3/4" of travel per pinion revolution to 5-1/4" of travel per pinion revolution. The center distance is 11-3/8" and the rack is mounted with 3/8" bolts.





PART NUMBER

310- 40 1 30 -235
(1) (2) (3) (4) (5)

BOX TYPE(1)	OUTPUT SHAFT(2)	GEAR TYPE(3)	INPUT HEIGHT(4)	VALVE(5)
306=HALF BOX	30=14"	1=DIRT	10=SHORT	.220 = LIGHT
307=FULL BOX	40=16"	2=ASPHALT	30= MEDIUM	.225 = LIGHT/MED
310 L/W HALF BOX (BLACK	50=18"		50=LONG	.235 = MED/LIGHT
318=L/W FULL BOX (BLACK)				.250 = MEDIUM
				.275 = HEAVY.

Sweet Manufacturing started with a clean sheet of paper and designed the lightest and most durable Sprint Gear on the market. Made from a compact 4140 Chro-Moly housing and 7075 billet side bells, with gundrilled pitman shafts that are made from the finest of material. All of this make the gear weigh a mere 24 pounds and with the lightweight upgrade it is taken down to a industry low of 22 pounds.





306-10300 - Sprint Car Pump Kit

The Power Steering Pump is the heart of the entire system. This Aluminum Pump has a flow control valve that provides smooth consistent feel regardless of RPM or Temperature this kit includes all bracketry and hardware necessary to mount.



306-30071- Standard Sprint Car Tank
306-30072 - Black Sprint Car Tank
Made from 6061 and features a knurled screw on cap with o-ring to ensure it's tight with zero leaks
20 oz capacity.

301-30056 - 5" Pressurized Tank w/ Tabs

A pressurized reservoir that uses nitrogen to force the fluid into the pump, helping prevent fluid starvation and cavitation. Also features mounting tabs for quick and easy installation on the firewall.



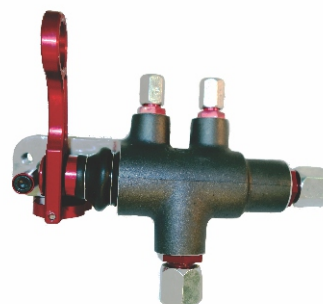
306-10210 - 8.5" Wing Cylinder
306-10200 - 10" Wing Cylinder
306-10215 - 12" Wing Cylinder

These cylinders were specifically designed to make wing adjustments under maximum pressure. Made in the U.S.A. with the finest materials available.



316-20008 - 8.5" Wing Cyl. Rebuild Kit
316-20010 - 10" Wing Cyl. Rebuild Kit
316-20012 - 12" Wing Cyl. Rebuild Kit

This rebuild kit is offered in 3 different lengths, one for each of the wing cylinders available at Sweet Manufacturing.



306-10100 - Sprint Car wing Valve

The industry's first wing valve to get its power directly from the pump. This revolutionary valve makes it possible to adjust your wing at full speed. Don't wait for caution to make your next adjustment!

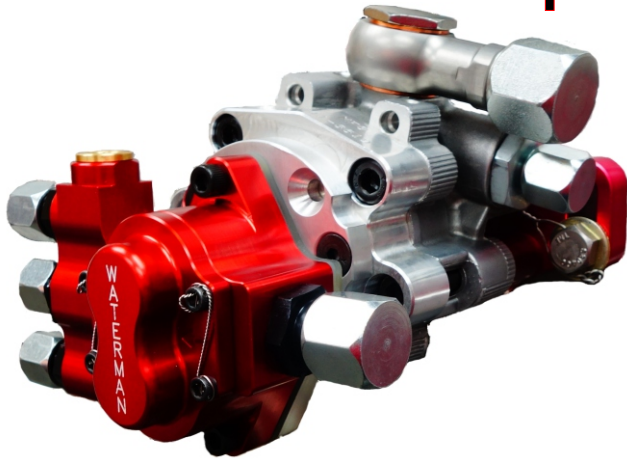


306-10250 - Sprint Car Gen 2 Wing Valve

The 2nd generation wing valve was designed with an integrated check valve and an updated housing to minimize the possibility of drifting in the wing.



Sprint Combination Assembly



306-20300 - Sprint Car Combination Assembly w/ 300 Gear

306-20400 - Sprint Car Combination Assembly w/ 400 Gear

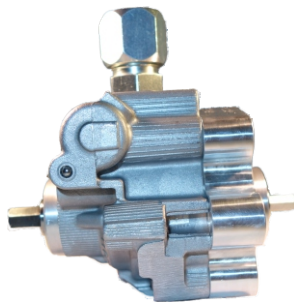
306-20500 - Sprint Car Combination Assembly w/ 500 Gear

These assemblies include everything that is needed to mount both the Fuel and Power Steering pump in the smallest and lightest design on the market. Unlike other combination assemblies, our design of Power Steering Pump will not "stall" in the corners or pits and maintains consistent flow regardless of fluid temp or RPM. The newly designed fuel pump doesn't require a clamp and is nearly two inches shorter than current models.

308-20200 - 300 Gear Sprint Fuel Pump

308-20400 - 400 Gear Sprint Fuel Pump

308-20500 - 500 Gear Sprint Fuel Pump



305-85835 - Sweet Aluminum Rear Drive Pump



301-61004 - Heat Resistant Phenolic spacer



301-61002 - Adapter Plate for Sweet Combination Pump



005-60313



005-60345

R.E.M. Finish Available
001-99999-1

REMOTE RACK AND PINIONS

PART NO.

005-80345

RACK
PREFIX

005-

80

3

4

5

(1)

(2)

(3)

(4)

RACK SPEED (1)

- 30 = 1 7/8"
- 40 = 2"
- 50 = 2-1/4"
- 60 = 2-1/2"
- 80 = 3"
- 90 = 3-1/4"
- 91 = 3-1/2"
- 92 = 3-3/4"
- 93 = 4"
- 94 = 4-1/4"
- 95 = 4-1/2"

CENTER DISTANCE (2)

- 1 = 16-1/2"
- 2 = 17-1/4"
- 3 = 18-1/4"
- 5 = SPECIAL ORDER
- 6 = 19-1/4"
- 7 = 19-3/4"
- 8 = 18/19-1/4"

POWER ASSIST (3)

- 1 = MANUAL
- 4 = DUAL POWER
- 5 = XL DUAL POWER

RACK ENDS (4)

- 2 = ON CENTER (5/8" - 18 THREADED STUD)
- 3 = ROD END EYE (5/8"-18 THREADED HOLE)
- 4 = ON CENTER ROD END EYE
- 5 = STD. SLOTTED EYE
- 6 = UPSIDE DOWN SLOTTED EYE
- 7 = DUAL HOLE ROD END EYE (ROCKET)
- 8 = R/H ON CENTER ROD END - L/H ROD END EYE
- 9 = R/H DBL SLOTTED UP- L/H SLOTTED UP
- 11 = R/H SLOTTED DOWN - L/H SLOTTED UP
- 12 = R/H SLOTTED UP - L/H SLOTTED DOWN

POPULAR PART NUMBERS

- 005-50345 2-1/4" 18-1/4" DP CYLINDER W/ SLOTTED EYES
- 005-60345 2-1/2" 18-1/4" DP CYLINDER W/ SLOTTED EYES
- 005-80345 3" 18-1/4" DP CYLINDER W/ SLOTTED EYES
- 005-60346 2-1/2" 18-1/4" DP CYLINDER W/ U/D SLOTTED EYES
- 005-80346 3" 18-1/4" DP CYLINDER W/ U/D SLOTTED EYES
- 005-603411 2-1/2" 18-1/4" DP CYLINDER W/ L/H SLOTTED R/H U/D SLOTTED
- 005-803411 3" 18-1/4" DP CYLINDER W/ L/H SLOTTED R/H U/D SLOTTED



Rack and Pinion Components

Rack Ends



001-21126



001-21110



001-21105

- 001-21116 - LH Slotted Rack Eye w/ DP Bracket
- 001-21117 - RH Slotted Rack Eye w/ DP Bracket
- 001-21126 - LH Upside Down Slotted Rack Eye w/ DP Bracket
- 001-21127 - RH Upside Down Slotted Rack Eye w/ DP Bracket
- 001-21128 - RH Dbl. Upside Down Slotted Rack Eye w/ DP Bracket
- 001-21103 - LH Rod End Eye w/ DP Bracket
- 001-21104 - RH Rod End Eye w/ DP Bracket
- 001-21105 - RH Dbl. Hole Rod End Eye w/ DP Bracket
- 001-21106-1 - RH Dbl Slotted Rack Eye w/ DP Bracket
- 001-21089 - 1" Ext. RH Rod End Eye w/ DP Bracket
- 001-21110 - LH On Center Rod End Eye w/ DP Bracket
- 001-21111 - RH On Center Rod End Eye w/ DP Bracket
- 001-21093 - LH On Center Rack Eye w/ DP Bracket
- 001-21094 - RH On Center Rack Eye w/ DP Bracket
- 001-21118 - Bolt Assembly for Slotted Rack Eye
- 001-21114 - Rod End for 001-21110 & 001-21111



001-21103



001-21093

001-21118



001-31020



001-21114

Integrated Pinions

- 002-11020 - 2-1/4" Pinion (9 tooth)
- 002-21020 - 2" Pinion (8 tooth)
- 002-31020 - 2-1/2" Pinion (10 tooth)
- 002-51020 - 1-7/8" Pinion (7 tooth)
- 002-71020 - 3" Pinion (12 tooth)
- 002-91020 - 3-1/4" Pinion (13 tooth)
- 002-91120 - 3-1/2" Pinion (14 tooth)
- 002-91220 - 3-3/4" Pinion (15 tooth)
- 002-91320 - 4" Pinion (16 tooth)
- 002-91330 - 4-1/4" Pinion (17 tooth)
- 002-91335 - 4-1/2" Pinion (18 tooth)
- 302-30160 - Hex Adapter for Int. Pinion



302-30160

Standard Pinions

- 001-11020 - 2-1/4" Pinion (9 tooth)
- 001-21020 - 2" Pinion (8 tooth)
- 001-31020 - 2-1/2" Pinion (10 tooth)
- 001-51020 - 1-7/8" Pinion (7 tooth)
- 001-71020 - 3" Pinion (12 tooth)
- 001-91020 - 3-1/4" Pinion (13 tooth)
- 001-91120 - 3-1/2" Pinion (14 tooth)
- 001-91220 - 3-3/4" Pinion (15 tooth)
- 001-91320 - 4" Pinion (16 tooth)
- 001-91330 - 4-1/4" Pinion (17 tooth)
- 001-91335 - 4-1/2" Pinion (18 tooth)



Rack and Pinion Components



Rack Shafts

- 001-21011 - 16-7/16" Rack Shaft
- 001-21012 - 14-1/16" Rack Shaft
- 001-21013 - 14-5/8" Rack Shaft
- 001-21014 - 15-7/8" Rack Shaft
- 001-21017 - 16-7/8" Rack Shaft
- 001-21018 - 17-7/16" Rack Shaft
- 001-51012 - 15-7/8" Angle Cut Rack Shaft



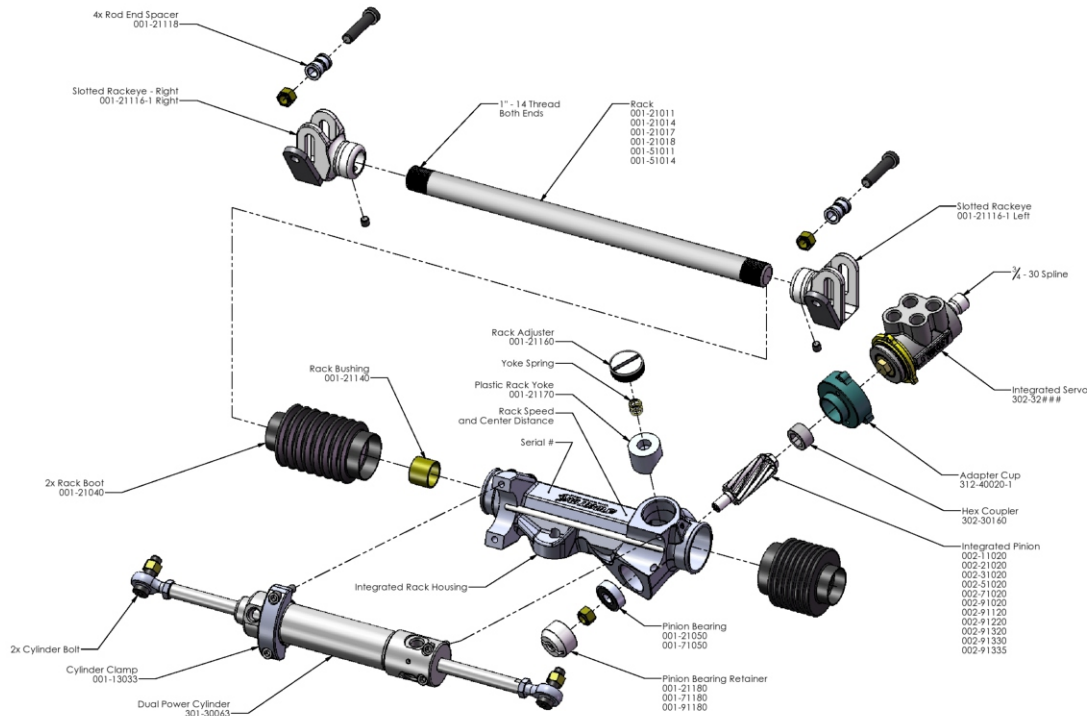
001-21502

Manual Rebuild Kits & Parts

- 001-21501 - Rebuild Kit for 2-1/4" Rack
- 001-21502 - Rebuild Kit for 2" Rack
- 001-21503 - Rebuild Kit for 2-1/2" Rack
- 001-21507 - Rebuild Kit for 3" Rack
- 001-21509 - Rebuild Kit for 3-1/4" Rack
- 001-21040 - Rack Boot
- 001-21170 - Yoke and Spring
- 001-21050 - Pinion Bearing (1-7/8", 2", 2-1/2")
- 001-71050 - Pinion Bearing (3" - 4-1/2")

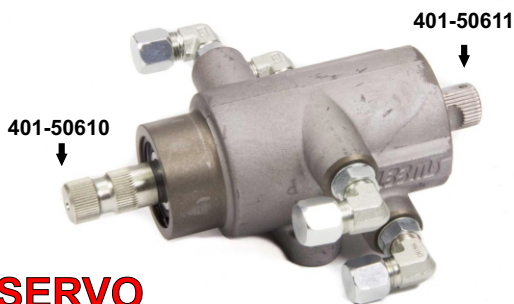


001-21170

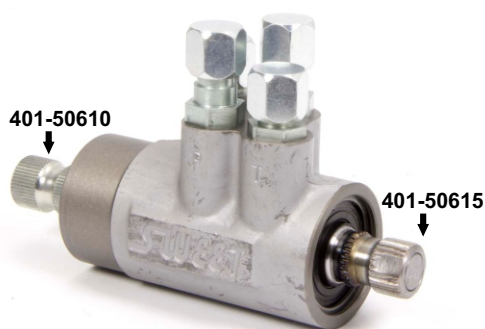


SERVOS

PART#	DESCRIPTION
301-30185	.185 STANDARD SERVO
301-30220	.200 STANDARD SERVO
301-30210	.210 STANDARD SERVO
301-30220	.220 STANDARD SERVO
301-30235	.235 STANDARD SERVO
301-30250	.250 STANDARD SERVO
301-30265	.265 STANDARD SERVO
301-30275	.275 STANDARD SERVO
301-30300	.300 STANDARD SERVO



STANDARD SERVO



LIGHTWEIGHT SERVO

PART#	DESCRIPTION
303-33185	.185 LIGHTWEIGHT SERVO
303-33200	.200 LIGHTWEIGHT SERVO
303-33210	.210 LIGHTWEIGHT SERVO
303-33220	.220 LIGHTWEIGHT SERVO
303-33235	.235 LIGHTWEIGHT SERVO
303-33250	.250 LIGHTWEIGHT SERVO
303-33265	.265 LIGHTWEIGHT SERVO
303-33275	.275 LIGHTWEIGHT SERVO
303-33300	.300 LIGHTWEIGHT SERVO
313-43055	LIGHTWEIGHT SERVO CLAMP

PART#	DESCRIPTION
302-32185	INTEGRATED .185 SERVO
302-32200	INTEGRATED .200 SERVO
302-32210	INTEGRATED .210 SERVO
302-32220	INTEGRATED .220 SERVO
302-32235	INTEGRATED .235 SERVO
302-32250	INTEGRATED .250 SERVO
302-32265	INTEGRATED .265 SERVO
302-32275	INTEGRATED .275 SERVO
302-32300	INTEGRATED .300 SERVO
312-40020-2	INTEGRATED SERVO RETAINING RING



INTEGRATED SERVO

Sweet Mfg Power Steering Servos are made from the finest materials available and are proven by their performance for over 25 years. The standard servo was the first available and weighs 5 lbs, nearly 15 years later the lightweight servo was developed and weighs just 2.5lbs.

Integrated servos are sold as replacement servos for integrated Rack and Pinions.

Power Steering Tanks

- 301-30050 5" Tank and Bracket
- 301-30051 5" Tank Only
- 301-30071 7" Tank and Bracket
- 301-30072 7" Tank only
- 301-30077 5" Pressurized Tank only
- 301-30078 7" Pressurized Tank and Bracket
- 301-30079 7" Pressurized Tank only
- 301-30094 Standard Tank Cap
- 301-30099 Pressurized Tank Cap



301-30079

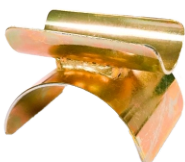


301-30050

The Power Steering Tank is a very important but often overlooked part of a proper Power Steering System. Always be sure to mount your tank as close to the pump as possible and above the feed fitting. The pressurized tank uses pressurized air to force the fluid to the pump, preventing starvation and cavitation.

Tank Brackets

301-30052



- 301-30052 Steel Clamp On Bracket
- 301-30053 Steel Bolt on Bracket
- 301-30088 1-3/4" Aluminum Clamp On Bracket
- 301-30089 1-1/2" Aluminum Clamp On Bracket

301-30088



301-30430

Power Steering Coolers

- 301-30420 Single Cooler Kit
- 301-30430 Dual Cooler Kit

Everything works well until it gets hot, Power Steering isn't any different. These coolers are designed specifically for the demands of racing and will significantly decrease the temperature of your fluid.

Power Assist Cylinders

- 301-30061 Std. Cylinder (16-1/2" eye to eye) 10.5" stroke
- 301-30062 Mini Cylinder (11-1/4" eye to eye) 6.5" stroke
- 301-30063 Dual Power Cylinder (1-1/4" Bore)
- 302-32063 Dual Power Cylinder (1-3/8" Bore)
- 302-33063 Dual Power Cylinder (1-1/2" Bore)



POWER STEERING PUMPS

All Sweet Mfg. Power Steering Pumps are variable pressure pumps with a control valve; each and every pump is hand assembled by the experienced hands of the employees at Sweet Manufacturing. In most cases a 1300 PSI , 3 GPM pump works well, however when wheel loads are high a higher PSI is needed.



305-85834 (Back)

PUMP PREFIX

305- 60 3 3 1
(1) (2) (3) (4)



305-60331

(1) Pump Type

(2) Pressure

(3) Gallons Per Minute

(4) Drive Type

- 60= TC Aluminum
- 70= TC Steel
- 80= Sweet Aluminum
- 85= Sweet Aluminum w/
Fuel Drive

- 1= 850
- 2= 1000
- 3= 1300
- 6= 1450
- 8= 1700

- 1= 2GPM
- 3= 3GPM
- 5= 4GPM

- 0= No Pulley
- 1= 6" Sweet Pulley (7/16" groove)
- 2= 6" Sweet Pulley (1/2" groove)
- 3= 7-1/2" Sweet Pulley (7/16" groove)
- 4= 3/8 Hex Drive
- 5= 6 groove Serpentine Pulley
- 7= 3 groove Serpentine Pulley
- 8= 6-Bolt Hub for CV Pulleys
- 9= HTD Pulley and Guides (33 tooth)

Popular Part Numbers

- 305-60331 TC Aluminum Pump 1300 PSI, 3 GPM with Sweet Pulley
- 305-70331 TC Steel Pump 1300 PSI, 3 GPM with Sweet Pulley
- 305-80831 Sweet Aluminum Pump 1700 PSI 3 GPM with Sweet Pulley
- 305-60334 TC Aluminum Pump 1300 PSI, 3 GPM with 3/8" Hex Drive
- 305-85834 Sweet Aluminum Pump 1700 PSI 3 GPM with 3/8" Hex drive and Fuel Pump Adapter
- 305-85839 Sweet Aluminum Pump 1700 PSI 3 GPM with HTD Pulley and Fuel Pump Adapter

Pulleys

- 301-30020 6" Aluminum Sweet Pulley (7/16" groove)
- 301-30021 6" Aluminum Sweet Pulley (1/2" groove)
- 301-30022 7-1/2" Aluminum Sweet Pulley (7/16" groove)
- 301-30025 5" Serpentine Pulley 3 groove
- 301-30027 6-Groove Serpentine Pulley (5-1/2")
- 301-30043 33 Tooth HTD Pulley with Guides
- 301-30047 38 tooth HTD Pulley with Guides



305-85839



301-30020



301-30043



Pump Brackets and Components

Oil Pump Adapters



325-30040

**325-30040 Oil pump to Sweet Aluminum Rear Drive Pump
(Does Not Fit Peterson R-4)**

325-30055 Peterson R-4 to Sweet Aluminum Rear Drive Pump

325-30057 Oil Pump to Power Steering Pump Adapter

325-30058 Stock Car Products Oil Pump Adapter

325-30059 Phenolic Spacer

325-30060 3/8-24 hreaded Female Hex

Power Steering Pump Brackets

325-30030



325-30030 Small Block Chevy Head Mount

325-30031 Big Block Chevy Head Mount

325-30034 Small Block Chevy Block Mount

325-30041 Bert / Brinn Bell Housing Mount

325-30035 Replacement T-Nut

325-30036 Bracket to Head Bolt Kit

325-30037 Pump to Bracket Bolt Kit

325-30039 Bracket to Block Bolt Kit

325-30041



Rear Mount Pump Brackets & Hardware



301-30022

501-30022-1 Left Hand Quick Change Mount Kit

501-30022 Right Hand Quick Change Mount Kit

501-30023 Right Hand Cast Bracket

501-30028 Left Hand Cast Bracket

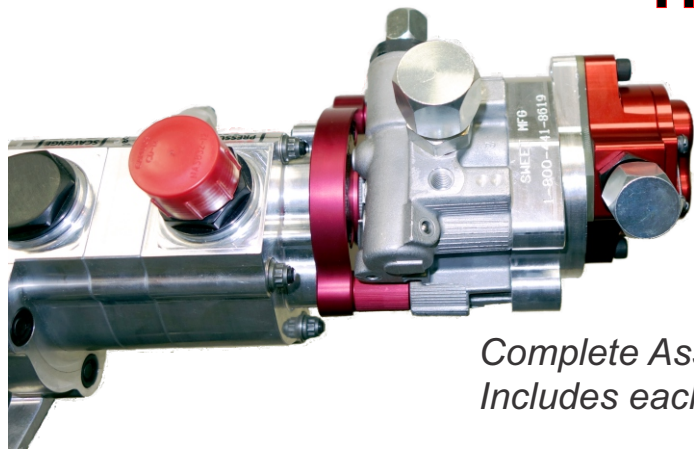
501-30026 Quick Change Mount Bolt Kit

501-30027 10-Spline Quick Change Yoke and Pulley

501-30037 32-Spline Quick Change Yoke and Pulley



Hex Drive Combination Assembly



Complete Assembly Part #**305-85880**
Includes each of the following:

325-30040 - Oil Pump to Sweet Pump Adapter

This adapter is for oil pumps such as Barnes, Older Petersons, Stockcar Products and most other oil pumps. If you are running a Peterson R-4 pump, a 325-30055 adapter is required.



305-85835 - Sweet Aluminum Pump with 3/8" Hex front and rear.

This power steering pump is very similar in design to the already popular Hex Drive Pump with Fuel Pump Adapter (305-85834). However, this new pump features a male hex on the back to allow for the new Waterman Fuel Pump.



301-61002 - Adapter Plate for Sweet Pump to Waterman Fuel Pump

This aluminum plate bolts to the back of the Sweet Rear Drive Pump (305-85835) and adapts the Waterman Fuel Pump (308-10200)



301-61004 - Heat resistant Phenolic spacer

This spacer reduces any heat that may be transmitted between the power steering pump and the fuel pump.



308-10200 - Sweet Mfg. designed Waterman Fuel Pump

Using over 100 years of racing and fuel system knowledge, Randy Sweet and Sid Waterman designed this fuel pump to be consistent and reliable. The 7075 billet aluminum housing bolts directly to the power steering pump which eliminates the use of a pinch clamp and shortens the mounting distance 1-1/2". Using a .300 gear, works well with alcohol or gas. Must use a regulator at the fuel log.





Head Mount Combination Assembly

Legal for 



Complete Assembly Part #**305-85890**
includes each of the following:

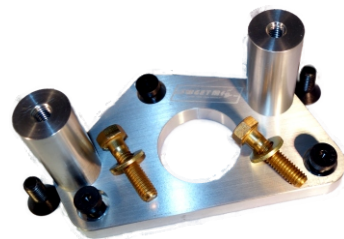
305-85900 - Combination Pump for Head Mount

Sweet Mfg Power Steering Pump with a Randy Sweet designed Waterman Fuel Pump. The Power Steering Pump comes with a 33 tooth HTD Pulley and features a unique Banjo style feed fitting to help make plumbing easy. The fuel pump can be used with both alcohol and gasoline.



301-30610 - Head Mount for Combination Pump

This Aluminum bracket is specifically designed to be mounted with the Combination Pump to the right side head on a small block Chevy.



301-30048 - 800mm HTD Belt

Uses 800mm long, 20mm wide HTD to connect to the mandrel that drives your Combination Pump



308-10300 - Dual Adjustable Fuel Regulator

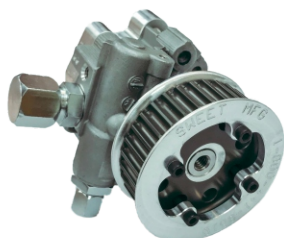
A dual adjustable two port fuel regulator from the leader in fuel regulators. The unique design allows you to adjust both idle pressure and high speed pressure for better throttle response. This regulator doesn't require any jets, pills or barrel valves.



BellHousing Mount Combination Assembly



Complete Assembly Part #**305-85841**
includes each of the following:



305-85840 - Sweet Power Steering Pump w/Fuel Pump Drive

This pump comes with a 33 tooth HTD Pulley and a rear male hex that drives the Sweet Mfg designed fuel pump.



301-61006 - Bellhousing Mount for Combination Pump

Bellhousing mount specifically designed to attach to the 305-85840 pump. The mount comes with all necessary hardware to bolt to a Brinn style bellhousing



301-61004 - Heat Resistant Phenolic Spacer

This spacer helps reduce any heat that may be transmitted from the Power Steering Pump to the fuel pump.



308-10200 - Sweet Mfg/Waterman Fuel Pump

Using over 100 years of racing and fuel system knowledge Randy Sweet and Sid Waterman designed this fuel pump to be consistent and reliable. The 7075 housing bolts directly to the power steering pump which eliminates the use of a pinch clamp and shortens the mounting distance 1-1/2". Using a .300 gear, works well with alcohol or gas. Must use a regulator at the fuel log.



PUMP KITS



305-80845

- 305-60345 Aluminum Pump, 5" Tank and Mount with SBC Head Mount
- 305-60349 Aluminum Pump, 5" Tank and Mount with SBC Block Mount
- 305-70345 Steel Pump, 5" Tank and Mount with SBC Head Mount
- 305-70349 Steel Pump, 5" Tank and Mount with SBC Block Mount
- 305-80845 Sweet Aluminum Pump, 5" Tank and Mount with SBC Head Mount
- 305-80849 Sweet Aluminum Pump, 5" Tank and Mount with SBC Block Mount

Sweet Mfg Power Steering & Mechanical Fuel Pump Driver Assembly



Assembly requires:

- 305-85839 Sweet Aluminum Pump w/ HTD 33 Tooth Pulley
- 308-10100 SBC Mechanical Fuel Pump Drive w/ Clamp
- 325-30044 Bellhousing Pump Mount
- 325-30059 Phenolic Spacer

HTD Belts



- 301-30033 576mm Long 20mm Wide HTD Belt
- 301-30044 600mm Long 20mm Wide HTD Belt
- 301-30048 800mm Long 20mm Wide HTD Belt

Power Steering Fluid



- 301-30179 Quart of Sweet Mfg fluid
- 301-30178 Case (6 quarts) Sweet Mfg. Valvoline Fluid

Sweet Mfg. Valvoline Power Steering fluid is best for Sweet Mfg. applications and has been used for years. Sweet Mfg. has partnered with Valvoline to bring you the best power steering fluid there is to offer. This anti-foaming formula is what you want for your steering systems.

Steering Universal Joints

Sweet Universal Joints are strong and precise with no "slop". Compact, lightweight and durable, these Universal Joints are capable of 32 degrees of misalignment while the double Universals are capable of an amazing 80 degrees of misalignment. These Universals are NASCAR approved and are available in Black Oxide, Stainless Steel and Chrome finish are available in select dimensions.

Randy Sweet's 1932 Ford



401-31919

Popular Part Numbers

Standard Universals

- 401-50606 3/4" smooth x 3/4" Smooth
- 401-50607 3/4" Smooth x 5/8" -36 Spline
- 401-50610 3/4" Smooth x 3/4" -48 Spline
- 401-50611 3/4" Smooth x 13/16" -36 Spline
- 401-50612 3/4" Smooth x 3/4" -36 Spline
- 401-50615 3/4" Smooth x 3/4" -30 Spline
- 401-50621 3/4" Smooth x 3/4" -20 Spline
- 401-51919 3/4" Double "D" x 3/4" Double "D"



401-50615



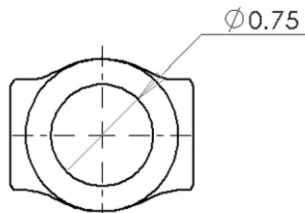
401-80615

Double Universals

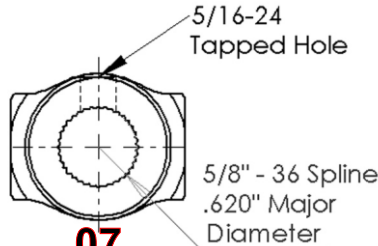
- 401-80606 DBL 3/4" Smooth x 3/4" Smooth
- 401-80612 DBL 3/4" Smooth x 3/4" -36 Spline
- 401-80615 DBL 3/4" Smooth x 3/4" -30 Spline
- 401-80618 DBL 3/4" Smooth x 1" -48 Spline
- 401-81923 DBL 3/4" Double "D" x 1" Double "D"
- 401-81919 DBL 3/4" Double "D" x 3/4" Double "D"

Don't be fooled by Chinese imitations, Sweet Mfg Universals are made entirely in the U.S.A. with only the highest grade materials available. 

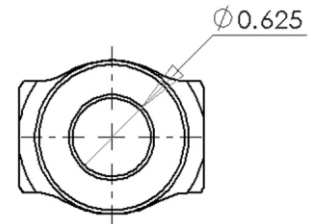
Universal Yokes Available



06
3/4" Smooth Bore

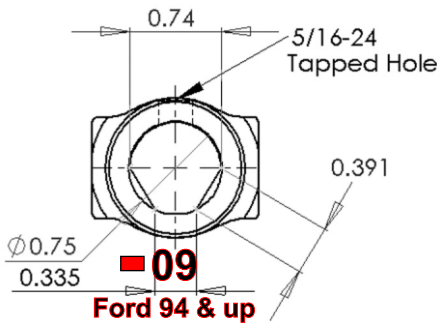


07
5/8" -36 Spline

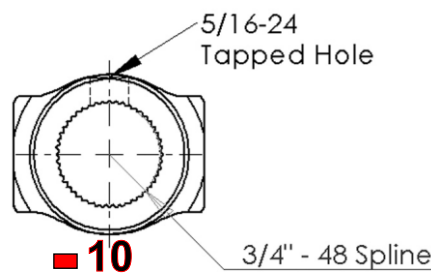


08
5/8" Smooth Bore

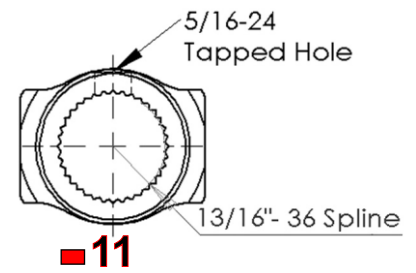
Mini Rack / Stiletto Rack



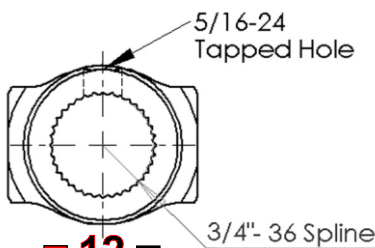
09
Ford 94 & up



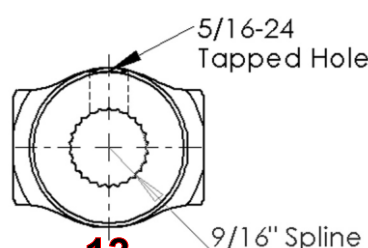
10
3/4"-48 Spline
Sweet Spline



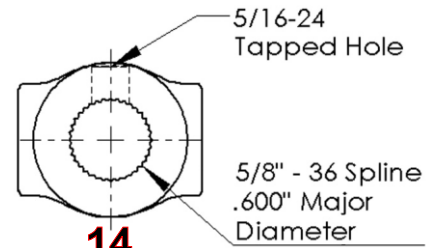
11
13/16 -36 Spline
Chevy Power



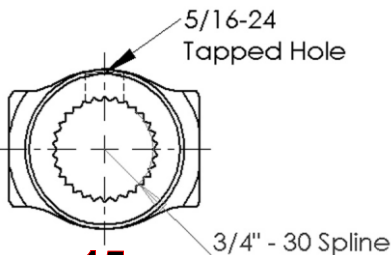
12
3/4 -36 Spline
Pinto Power
Steering Quickener



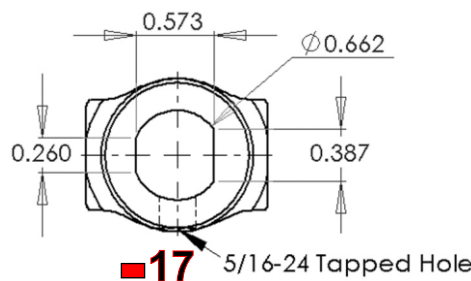
13
9/16" -26 Spline
Pinto Manual



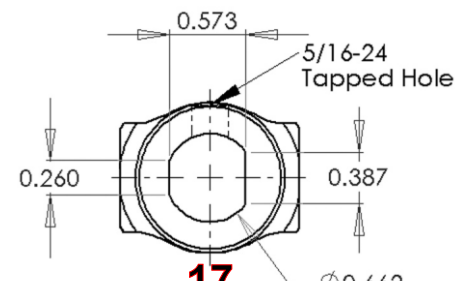
14
5/8 -36 Spline
Vega



15
3/4" -30 Spline
New Chevy Power
Sweet Int. Rack



17
Corvette Bottom Set Screw



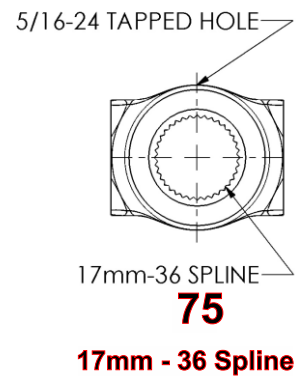
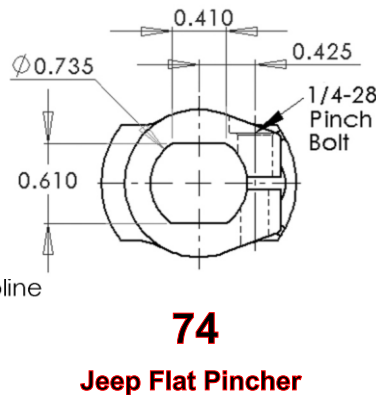
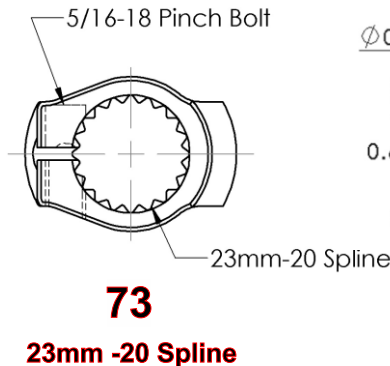
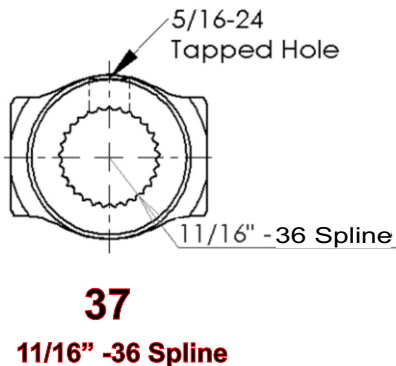
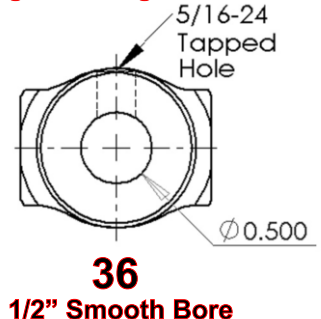
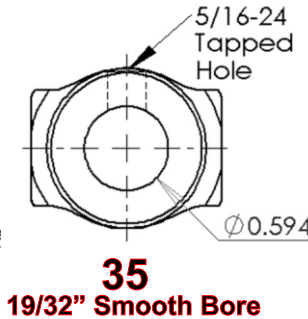
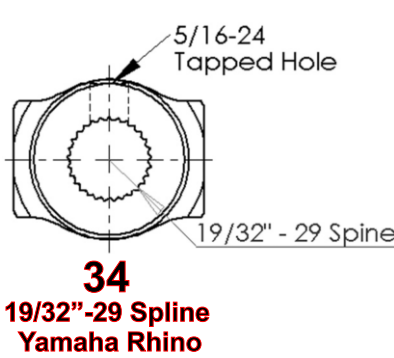
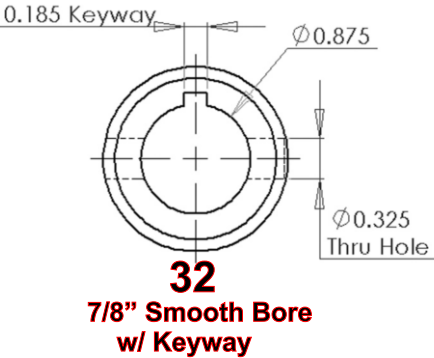
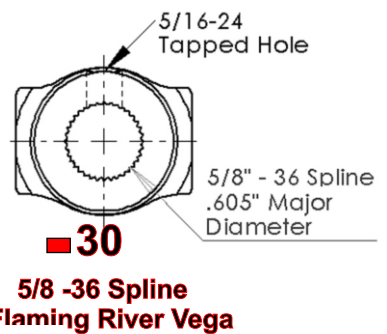
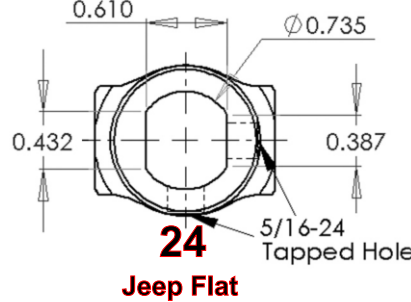
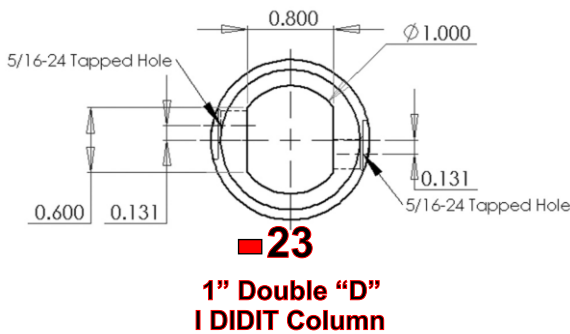
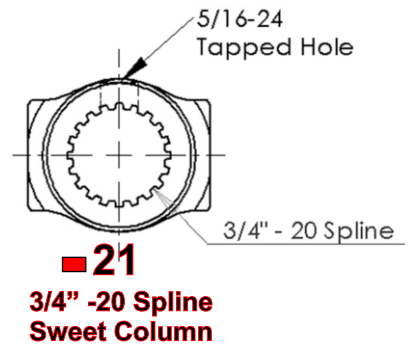
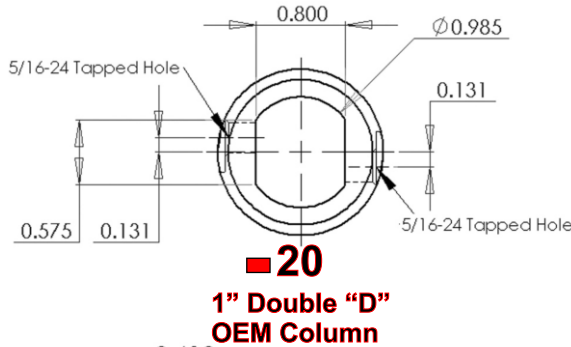
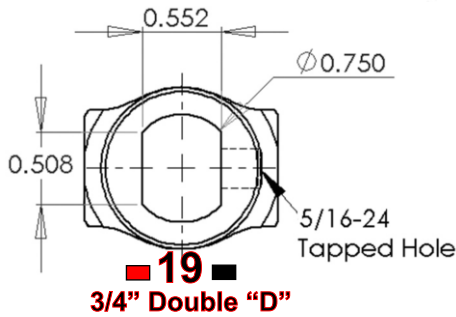
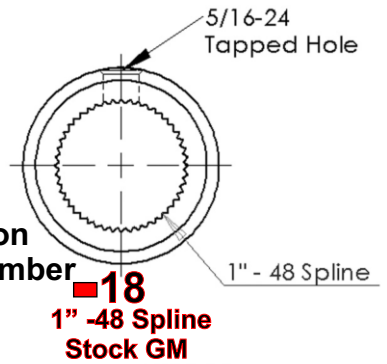
17
Corvette Top Set Screw

 = Available In Chrome
 = Available In Stainless Steel



To select a part number start by using the Universal Joint prefix of "401-" next choose either "5" for Standard, "3" for Stainless, "6" for Standard with Chrome finish, "8" for Double and "9" for Double Chrome. Follow with the combination of yokes you would like, with the lowest number first. Example:

(401-50615 = STD. 3/4"-Smooth x 3/4"-30)



 = Available In Chrome
 = Available In Stainless Steel

Splined Couplers



301-30100

- 301-30100 Sweet Spline 3/4"-48
- 301-30110 Chevy Power 13/16-36 Spline
- 301-30120 Chevy Manual / Steering Quickner 3/4"-36 Spline
- 301-30130 Pinto Manual 9/16-26 Spline
- 301-30140 Vega 5/8-36 Spline (.600 Major Dia.)
- 301-30141 Mini Sprint 5/8-36 Spline
- 301-30150 Sweet Int. Rack / New Chevy Power 3/4"-30 Spline
- 301-30160 Sweet Adj. Steering Couolumn 3/4"-20 Spline

Steering Shaft Supports



405-10405



901-50009

- 405-10405 3/4" Lightweight Firewall Support Bearing
- 405-50003 3/4" Firewall Flange Bearing
- 901-50009 3/4" Oversized Rod End w/ Jam Nuts
- 405-10369 1-1/8" Alum. Support Bearing
- 405-10373 1-1/8" Alum. Pinch Collars (Pair)



405-10373



405-10369

Steering Shaft

- 006-52175 24" DD Steering Shaft (3/4")
- 006-52177 36" DD Steering Shaft (3/4")
- 405-50367 36" 3/4" D.O.M. w/ 3/4-48 Spline
- 405-50369 36" 3/4" D.O.M. w/ 3/4-48 Spline Both Ends
- 405-10429 31" 1-1/8" .065 w/ 1"-48 Spline Both Ends
- 405-10427 29" 1-1/8" .065 w/ 1"-48 Spline Both Ends
- *Custom steering shafts can be made to any length*



3/4" -48 Spline



- 405-10100 Lower Adjustable Steering Shaft

Mounting Brackets



- 405-10210 4-3/8" Dash Bracket
- 405-10215 6-3/8" Dash Bracket
- 405-10220 9-3/8" Dash Bracket
- 405-10230 1-3/4" to 1-1/2" Reducers
- 405-10240 3/4" Mono Ball Steering Shaft Collar
- 405-10243 1-1/8" Mono Ball Steering Shaft Collar

405-10240



Adjustable Steering Columns

405-10001



Adjustable Steering Columns are required in all NASCAR series. They are not only a must when it comes to safety, but also reduces bind in your steering shaft. The 8" of adjustability makes mounting a steering shaft simple for any size driver. All Columns have a 3/4-20 Splined Shaft.

- 405-10001 18" Adjustable Steering Column
- 405-10003 21" Adjustable Steering Column
- 405-10006 23" Adjustable Steering Column
- 405-10009 25" Adjustable Steering Column

Mounting Brackets

- 405-10210 4-3/8" Dash Bar Brackets
- 405-10215 6-3/8" Dash Bar Brackets
- 405-10220 9-3/8" Dash Bar Brackets
- 405-10205 1-Hole Column Clamp
- 405-10207 3-Hole Column Clamp
- 405-10230 1-3/4" to 1-1/2" Reducer



All Brackets are for 1-3/4" Tubing, 405-10230 is required if using a 1-1/2" Dash bar.

Quick Releases & Hardware



- 801-70001 Steel Quick Release w/ Coupler
- 801-70002 Steel Sprint Car Quick Release w/ Coupler
- 801-70004 Alum. Quick Release w/ Coupler
- 801-70005 Alum. Sprint Car Quick Release w/ Coupler
- 801-70030 Adj. Column Steel Quick Release w/ Coupler
- 801-70031 Adj. Column Alum. Quick Release w/ Coupler
- 801-70026 Adj. Column Coupler w/ Hardware
- 801-70035 Alum Quick Release w/o Coupler
- 801-70036 Steel Quick Release w/o Coupler
- 801-70055 6-Bolt Alum. Quick Release



- 801-70052 Long Spline weld on Coupler
- 801-70100 Light Weight Adj. Column Steel Quick Release w/ Coupler
- 801-70105 Light Weight Steel Quick Release
- 801-70200 Light Weight Adj. Column Alum. Quick Release w/ Coupler
- 801-70205 Light Weight Alum Quick Release
- 801-70150 5/16-18 Titanium Quick Release Bolt Kit
- 801-80100 4-Bolt Mini Ultralite Aluminum Quick Release w/ Coupler
- 801-80300 3-Bolt Mini Ultralite Aluminum Quick Release w/ Coupler
- 801-80010 4-Bolt, 3-Bolt Mini Ultralite Weld On Stub Shaft



All Quick Releases are SFI approved 42.1

Lightweight Adjustable Steering Columns



- 405-10310 Std. Adj. Column
- 405-10315 GRT Adj. Column
- 405-10316 Shaw / Swartz Adj. Column
- 405-10317 Rocket Adj. Column
- 405-10325 Rayburn Adj. Column



Lightweight Adjustable Steering Columns come complete with an aluminum Quick Release and are available with either 1-1/8" Rod End Mounting or Monoball style. These columns are assembled and welded in Kalamazoo, MI using the finest materials available.

- 405-10331 Std Adj. Column w/ Monoball Mount
- 405-10314 Shaw / Swartz Column w/ Monoball Mount
- 405-10326 Rayburn Column w/ Monoball Mount

Monoball Mounted Columns must use Dash Mounting Brackets

- 405-70035 Replacement Quick Release



Steering Wheels

Sweet Manufacturing has been producing American made racing Steering Wheels for over 20 years. Our Steering wheels are made from 6061 Aluminum and feature a soft rubber grip. The wheels are offered in standard size (7/8" dia.) and large grip (1-1/16" dia). Both grip sizes are also offered in Flat and Dished centers, and also available without coating.

Standard Grip

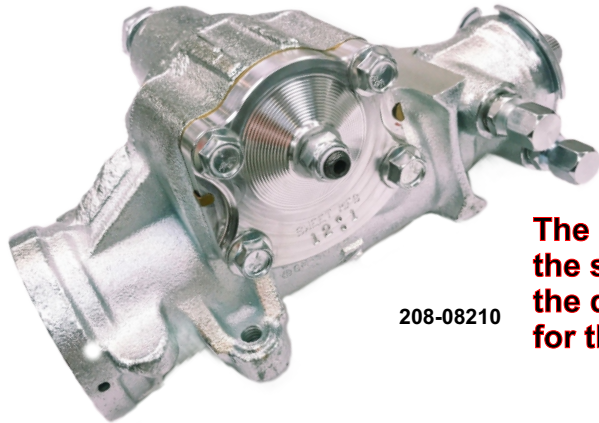
- 601-70131 13" Flat Steering Wheel
- 601-70132 13" Dished Steering Wheel
- 601-70151 15" Flat Steering Wheel
- 601-70152 15" Dished Steering Wheel
- 601-70161 16" Flat Steering Wheel
- 601-70162 16" Dished Steering Wheel
- 601-70171 17" Flat Steering Wheel
- 601-70172 17" Dished Steering Wheel
- 611-70131 13" Flat Uncoated
- 611-70132 13" Dished Uncoated
- 611-70151 15" Flat Uncoated
- 611-70152 15" Dished Uncoated
- 611-70171 17" Flat Uncoated
- 611-70172 17" Dished Uncoated

Large Grip

- 601-60151 15" Large Grip Flat
- 601-80152 15" Large Grip Dished
- 601-80161 16" Large Grip Flat
- 601-80162 16" Large Grip Dished
- 601-80171 17" Large Grip Flat
- 601-80172 17" Large Grip Dished
- 611-80151 15" Flat Uncoated Large Grip
- 611-80152 15" Dished Uncoated Large Grip



Sportsman Steering Box

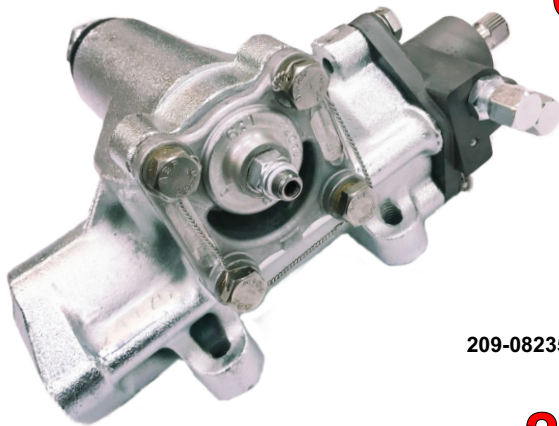


208-08210

Sweet Mfg Sportsman Steering boxes were developed for the budget minded racer. These boxes are offered in 6 different ratios. (16:1, 14:1, 12:1, 10:1, 8:1, and 6:1)

The 8:1 and 6:1 ratio are specifically designed to eliminate the steering quickener. When the quickener is eliminated, the driver has a more direct feel in the steering wheel for the race track.

600 Series NASCAR Box



209-08235

Sweet Mfg. NASCAR steering boxes are offered in (8) different ratios ranging from 6:1 (fastest) to 17.5:1 (slowest). 600 series boxes are dyno tested for quality assurance and ran on our centering machine to find the center tooth and eliminate any possible tight spots through travel. The exact degree of the pitman shaft is then stamped on the steering box. The 600 series box is 6 pounds lighter than the Sportsman Steering Box.

***NEW* for 2016: Lightweight 700 series Box.**

208- 08 210

Type of Box	Ratio	Valve
204 - Lightweight Sportsman 3/4-30	06 - 6:1	.185 -XX-Light
205 - Lightweight Sportsman 13/16-36	08 - 8:1	.200 - X-Light
206 - Sportsman 3/4"-30 Spline input	10 - 10:1	.210 - Light
208 - Sportsman 13/16"-36 Spline input	12 - 12:1	.220 - Light
209 - 4-Bolt Nascar 600 Series	14 - 14:1	.235 - Med./Light
	16 - 16:1	.250 - Medium
	17 - 17.5:1	.265 - Medium / Heavy
		.275 - Heavy



Billet Pitman Arms

Offset Pitman Arms

- 201-28000- 0 Degree
- 201-28105- .5 Degree Left
- 201-28110- 1.0 Degree Left
- 201-28115- 1.5 Degree Left
- 201-28120- 2.0 Degree Left
- 201-28125- 2.5 Degree Left
- 201-28130- 3.0 Degree Left
- 201-28135- 3.5 Degree Left
- 201-28205- .5 Degree Right
- 201-28210- 1.0 Degree Right
- 201-28215- 1.5 Degree Right
- 201-28220- 2.0 Degree Right
- 201-28225- 2.5 Degree Right
- 201-28230- 3.0 Degree Right
- 201-28235- 3.5 Degree Right

- 201-28011 - 7/8" Nut
- 201-28013 - 7/8" Lock Washer

Straight Pitman Arms

- 201-29000- 0 Degree
- 201-29105- .5 Degree Left
- 201-29110- 1.0 Degree Left
- 201-29115- 1.5 Degree Left
- 201-29120- 2.0 Degree Left
- 201-29125- 2.5 Degree Left
- 201-29130- 3.0 Degree Left
- 201-29135- 3.5 Degree Left
- 201-29205- .5 Degree Right
- 201-29210- 1.0 Degree Right
- 201-29215- 1.5 Degree Right
- 201-29220- 2.0 Degree Right
- 201-29225- 2.5 Degree Right
- 201-29230- 3.0 Degree Right
- 201-29235- 3.5 Degree Right



STEERING BOX FITTINGS

- 201-28001 - 14mm x 1.5 w/ O-Ring Fitting
- 201-28002 - 16mm x 1.5 w/ O-Ring Fitting
- 201-28003 - 5/8"-18 Flare Fitting (Pre 1978)
- 201-28004 - 11/16"-18 Flare Fitting (Pre 1978)

Steering Box Seal Kits

- 201-28020 - Steering Box Seal Kit (700 Series)
- 201-28016 - Pitman Shaft Seal Kit (Old Style)
- 201-28017 - Pitman Shaft Seal Kit (New Style)



Suspension Components

- 501-60045 - Quick Adjust Panhard Bar Bracket
- 501-60034 - Serrated Panhard Bar Bracket
- 501-60034-6 - Replacement Spacer and Bolt Kit
- 501-60016 - Replacement O-Ring
- 501-60017 - Replacement Seal



Aluminum Torque Absorbers can be used in Top Links and Trailing Arms to Promote Traction



- 501-60040 Aluminum Torque Absorber
- 501-60041 - Replacement Elastomer
- 501-60042 - Steel Torque Absorber

1-3/4" Aluminum Clevis is made from 6061 T-6 aluminum and features grade 9 bolts.



501-60010



501-60015

Sweet Mfg Panhard Bar Hoops were the "Original" and are still the strongest.

- 501-60012 Heavy Duty Panhard Bar Hoop
- 501-60015 Lightweight Panhard Bar Hoop
- 501-60032 Replacement Monoball (com-12)
- 501-60115 Replacement Stud

501-60007 - Aluminum Coilover Bracket



501-60050 - Top Link Brackets



Miscellaneous

Custom R.E.M. Finishing available,
call for any custom inquiries



302-32100

- 301-30080 - Rack and Pinion Hose Kit
- 301-30081 - Steering Box Hose Kit
- 301-30082 - Rear Mount Hose Kit
- 301-30083 - Int. Rack w/ PTO Pump Hose Kit
- 301-30084 - Int. Rack w/ Standard Mount Hose Kit
- 302-32100 - Int. Rack Hose Kit



301-30083

Aluminum Brake Brackets clamp to a 3" Axle Tube and have bolts that are threaded into the tube to ensure strength.

- 501-60008 Standard Aluminum Brake w/ Caliper Bracket.
- 501-60009 Dirt 1" Wide Aluminum Brake Bracket w/ Caliper Bracket



501-60009



- 901-10151 - Air Cleaner Knob
- 901-10150 - 4130 Chro-Moly Air Cleaner Stud (5/16-18)

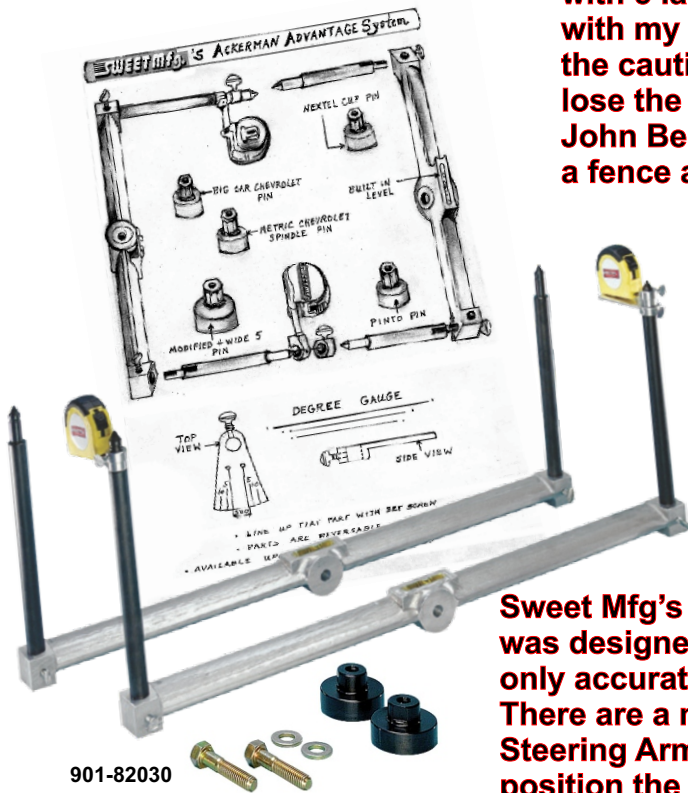
901-10008 - Carburetor Hat

Cast from 100% virgin aluminum and fitted with an o-ring.



“One night at Berlin I was leading the feature with 5 laps to go, I whacked Scott Pressley with my RF and knocked my Toe in. Under the caution I thought there was no way I could lose the race, but when they threw the green John Benson passed me like I was painted to a fence and in three laps I was in 5th.”

Randy Sweet



Sweet Mfg's one of a kind Ackerman Advantage system was designed from Randy Sweet's experience and is the only accurate way to put the steering in your car. There are a million different drag links, idler Arm and Steering Arm lengths along with several different ways to position the rack or Steering Box that can change the way the front wheels turn.

“You want to make damn sure they don't toe in!”

- 901-82010 - AAS w/ NASCAR / SCP Adapter**
- 901-82020 - AAS w/ Pinto Adapter**
- 901-82030 - AAS w/ Wide 5 Adapter**
- 901-82050 - AAS w/ Impala Adapter**



901-11050 - Signed Randy Sweet Bobble Head



A one of a kind car built and driven by a one of a kind innovator of Motorsports. Randy Sweet's "Rocket Car" is now on display at Bill Smith's American Museum of Speed in Lincoln, Nebraska.

Fabricated Spindles

The combination of spindles is nearly endless, here are a few of our most popular and if you don't see what you are looking for please call.



701-120-123

Spindle Prefix

701

Spindle Number

120

Pin Style

1

Brake Bracket

2

Left or Right

3

8	East Coast Mod.	101
8	Sweet EC Mod	105
12	Ford	107
8	East Cost Mod	115
8	Dirt Late Model	118
10	Figure 8	119
10	Ford	120
10	Chevy	121
8	Pinto	122
5	Ford	141
5	Chevy	148
7	Ford	150
7	Chevy	157

1 = Wide 5
2= 5x5
4= GM Impala

0 = East Coast
1 = GM
2 = Superlite (11-3/4 Rotor)
3 = Dynalite
5 = Superlite (12-3/16 Rotor)
6 = No Brake

1 = Left
2 = Right
3 = Left adj.
4 = Right adj.



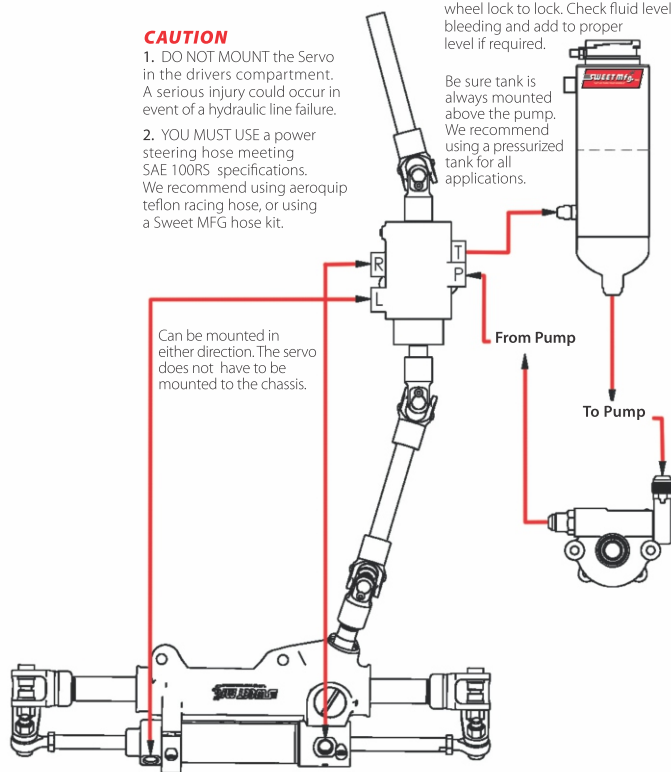
LINE HOOKUPS

CAUTION

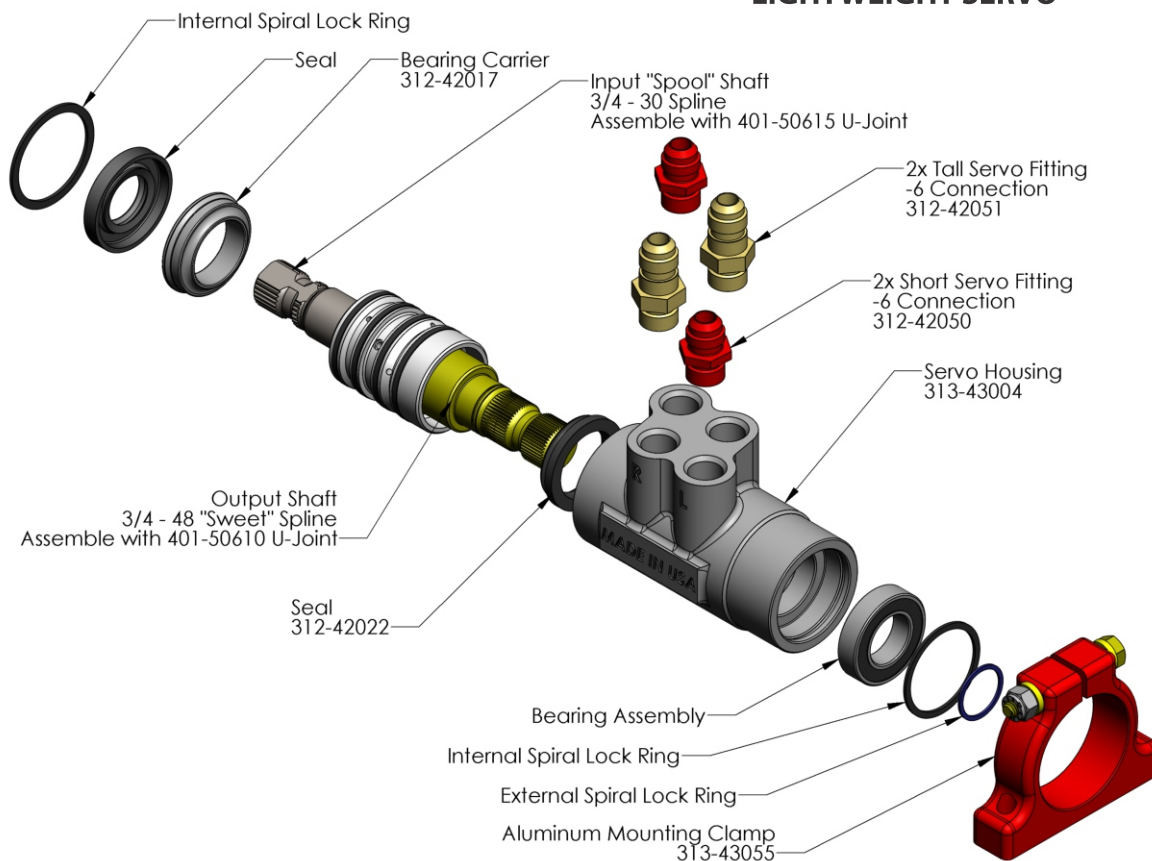
1. DO NOT MOUNT the Servo in the drivers compartment. A serious injury could occur in event of a hydraulic line failure.
2. YOU MUST USE a power steering hose meeting SAE 100RS specifications. We recommend using aeroquip teflon racing hose, or using a Sweet MFG hose kit.

Fluid should be at least 2 inches above the return line. To bleed system, rotate steering wheel lock to lock. Check fluid level after bleeding and add to proper level if required.

Be sure tank is always mounted above the pump. We recommend using a pressurized tank for all applications.



LIGHTWEIGHT SERVO



Wing Valve This revolutionary new wing valve gets its power directly from the powering steering pump, this provides maximum pressure to the wing cylinder.

Use -06 Aeroquip Teflon racing hose from the pump to the wing valve maximum operating pressure of 2,500 psi

Use -03 Aeroquip Teflon racing hose from wing valve to wing cylinder maximum operating pressure of 3,000 psi

Do not use a T from the pump to the wing valve

Wing valve travel 3 per second. **DO NOT BUMP HANDLE FOR MORE THAN 1/2 SECOND, HOLDING THE HANDLE WILL LEAD TO FAILURE, IF YOU GET GREEDY YOU WILL BE NEEDY!!!**

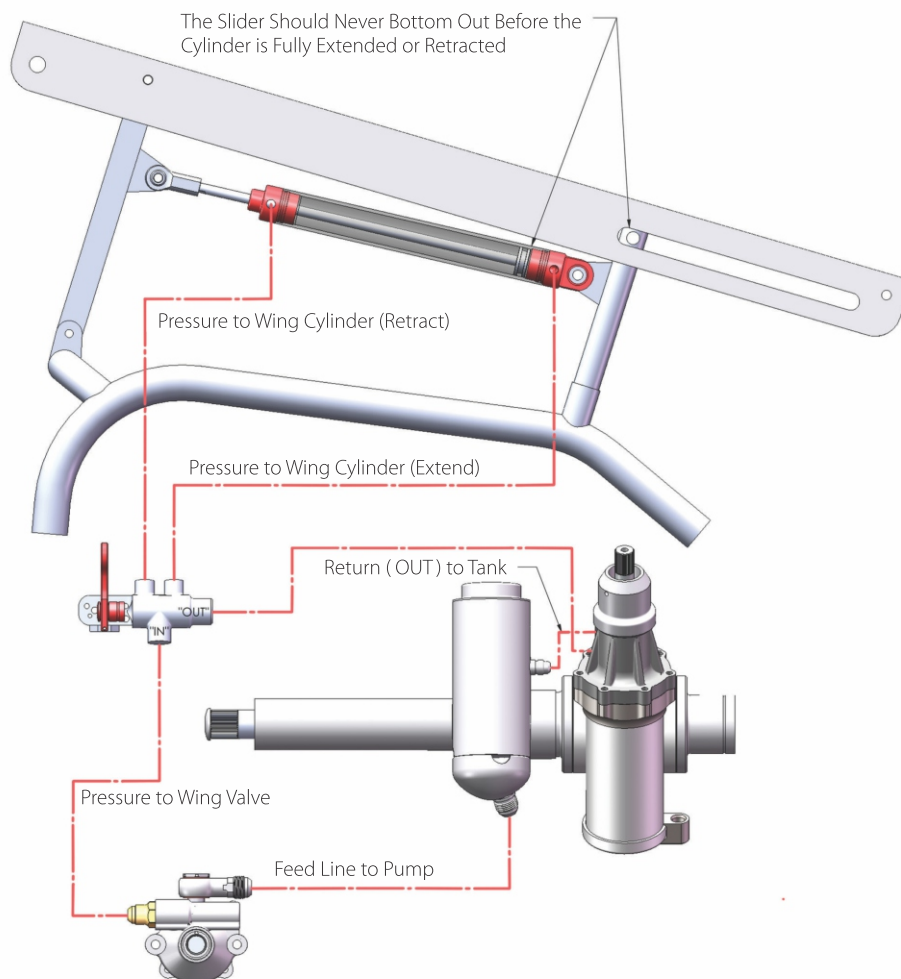
Wing Cylinder This cylinder was specifically designed for sprint car wing adjustment with maximum pressure of 1,700 psi. It features a 8 1/2, 10, or 12 stroke and is made in the U.S.A. with the finest materials

Check your wing travel and adjust cylinder stroke w/ locking collar. **DO NOT OVER EXTEND TRAVEL, THIS WILL LEAD TO FAILURE**

Current wing cylinders are an air cylinder designed for very low pressure. **DO NOT INTERCHANGE SWEET MFG. WING CYLINDER WITH CURRENT WING CYLINDER, THIS WILL LEAD TO FAILURE.**

DO NOT USE CURRENT WING CYLINDER W/ SWEET MFG. WING VALVE, THIS WILL LEAD TO FAILURE.

SPRINT STEERING PLUMBING DIAGRAM





TERMS AND POLICIES

TERMS: Orders are shipped only upon receipt of credit card approval or certified check unless satisfactory credit arrangements have been made. Open accounts are net payable upon receipt. Any account not paid within 30 days may be placed on C.O.D. and may thereafter be paid only with a certified check until further notice in writing from Sweet Manufacturing, Inc. ("Sweet Mfg."). All returned checks will be assessed a \$25.00 service charge and, if associated with an open account, may thereafter be paid only with a certified check until further notice in writing from Sweet Mfg. Sweet Mfg. may terminate any open account in its sole discretion. These *Terms and Policies* govern in the event of any conflicting oral or written representation by a Sweet Mfg. employee, officer or agent.

SHIPPING: All orders for parts that Sweet Mfg. has in stock are shipped within 24 hours (M-F only), with most orders being shipped the same day they are received (M-F only). Sweet Mfg.'s normal method of shipping is UPS Groundtrac. Next day, second day, and three day select are available at an additional cost. Arrangements for shipping by bus, air, or truck can be made; however, prepayment of your order may be required when using these freight carriers.

WHAT CAN BE RETURNED: Sweet Mfg. will accept for return or exchange any product purchased from Sweet Mfg., except special orders, within 30 days from the invoice date. Purchasers will receive credit for parts only. Sweet Mfg. does not credit shipping charges. Items accepted for return are subject to a 15% re-stocking charge. After 30 days, Sweet Mfg. will accept only defective parts for repair or exchange, at Sweet Mfg.'s option.

WHAT CANNOT BE RETURNED: Sweet Mfg. will not accept for return any special order; custom built part; any item built to customer specifications, or items that have been used, modified, altered or allowed to deteriorate to a condition where they cannot be resold as new.

NO WARRANTY; LIMITATION OF LIABILITY: SWEET MFG. PRODUCTS ARE SOLD "AS IS", AND WITHOUT ANY EXPRESS WARRANTY WHATSOEVER. TO THE FULLEST EXTENT ALLOWED BY STATE AND FEDERAL LAW, SWEET MFG. EXPRESSLY DISCLAIMS IMPLIED WARRANTIES OF MERCHANTABILITY AND FITNESS FOR A PARTICULAR PURPOSE, EVEN IF A PARTICULAR PURPOSE IS MENTIONED IN A SWEET MFG. CATALOG, WRITTEN MATERIALS OR OTHERWISE. SWEET MFG. EXPRESSLY DISCLAIMS ALL LIABILITY FOR DIRECT, INDIRECT, SPECIAL, INCIDENTAL OR CONSEQUENTIAL DAMAGES, INCLUDING BUT NOT LIMITED TO, DAMAGE TO OR LOSS OF LIFE, PROPERTY OR EQUIPMENT, LOSS OF PROFITS OR REVENUE, COSTS OF PURCHASE OR REPLACEMENT OF GOODS, OR CLAIMS FROM ANY INDIVIDUAL OR ENTITY THAT RESULT FROM THE USE OF ANY SWEET MFG. PRODUCT. PURCHASERS OF SWEET MFG. PRODUCTS ACKNOWLEDGE THAT RACING IS INHERENTLY DANGEROUS AND THAT SWEET MFG. HAS MADE NO REPRESENTATIONS, ORAL OR WRITTEN, THAT ITS PRODUCTS CAN REDUCE OR ELIMINATE ANY SUCH INHERENT RISKS. IN NO EVENT SHALL THE LIABILITY OF SWEET MFG., WHETHER IN TORT, CONTRACT OR OTHERWISE, EXCEED THE COST OF THE PRODUCT AT ISSUE. PURCHASERS SHOULD BE AWARE THAT THEY MAY HAVE LEGAL RIGHTS WHICH VARY FROM STATE TO STATE.

SHOULD ANY SWEET MFG. PRODUCT APPEAR DEFECTIVE FOLLOWING PURCHASE, THE PURCHASER, AND NOT THE MANUFACTURER, DISTRIBUTOR OR RETAILER, ASSUMES THE ENTIRE COST OF ALL NECESSARY SERVICING OR REPAIR. SWEET MFG. PRODUCTS THOUGHT BY PURCHASER TO BE DEFECTIVE UPON RECEIPT OR INITIAL INSTALLATION CAN BE RETURNED AT PURCHASER'S COST TO SWEET MFG. FOR INSPECTION AND WILL BE HANDLED ON A CASE-BY-CASE BASIS WITH REPAIR OR EXCHANGE AT SWEET MFG.'S OPTION IN ACCORDANCE WITH THESE TERMS AND POLICIES. SWEET MFG. PRODUCTS ARE NOT STREET LEGAL OR CERTIFIED UNDER FEDERAL MOTOR VEHICLE SAFETY STANDARDS AND REGULATIONS; ITS PRODUCTS ARE NEITHER INTENDED NOR CERTIFIED FOR USE ON PUBLIC STREETS OR HIGHWAYS, BUT ARE SPECIFICALLY DESIGNED AND INTENDED ONLY FOR USE ON RACE VEHICLES OPERATED ON RACE TRACKS WITH THE APPROPRIATE SUPERVISION OF QUALIFIED ENGINEERS AND MECHANICS TO INSURE THAT THE SAFETY NEEDS OF THE RACE DRIVER AND OTHERS ARE MET. SWEET MFG. PRODUCTS COULD BE COMBINED IN NUMEROUS COMBINATIONS, AND THE USE OF SOME PARTS ON SOME VEHICLES IN CERTAIN INSTANCES COULD ADVERSELY AFFECT THE PERFORMANCE OF THE VEHICLE OR OTHER RACE PARTS. PURCHASERS MUST CONTACT SWEET MFG. AT (269) 344-2086 WITH RESPECT TO PRODUCT DEFECT CLAIMS.

REPAIR SERVICE: Sweet Mfg. offers repair/rebuilding service on all of its steering products for a nominal labor charge plus the cost of any parts that may need replacing. Send your merchandise to Sweet Mfg. accompanied by a note stating what you want done; if your repair is urgent, you must indicate so in your note. In most cases Sweet Mfg. can repair and return steering products the same day they are received if necessary (M-F only). Repairs can be billed to all major credit cards or returned C.O.D. certified check. It is very important to include your name, return address, and phone number with all products submitted for repair. Any repaired part left at Sweet Mfg. for more than 60 days will become property of Sweet Mfg.